

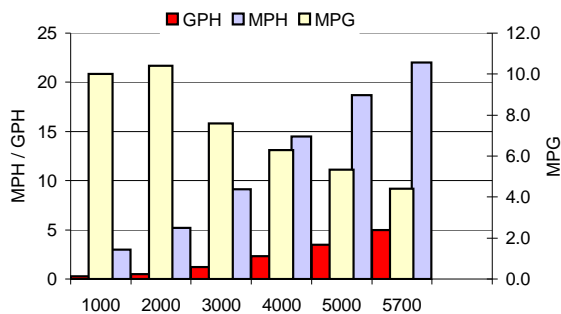
## TEST CONDITIONS

Test Date	7/25/2011
Test Conductors	Dustin Merveldt
Boat Weight as Tested (pounds)	2350*
Air Temperature (degrees Fahrenheit)	85
Elevation (feet)	700
Wind Velocity (MPH)	5-10 MPH
Fresh/Salt Water	Fresh
Fuel Level at Testing (gallons)	12 Gallons

## PERFORMANCE SUMMARY

Top Speed (MPH@RPM)	22 @ 5700
Acceleration 0 - 20 MPH (seconds)	10.3
Acceleration 0 - 30 MPH (seconds)	N/A

## PERFORMANCE CURVE



## PERFORMANCE DATA

RPM	SPEED	FUEL	FUEL
RANGE	MPH	GPH	MPG
1000	3	0.3	10.0
2000	5.2	0.5	10.4
3000	9.1	1.2	7.6
4000	14.5	2.3	6.3
5000	18.7	3.5	5.3
5700	22	5	4.4

#DIV/0!

## ENGINE SPECIFICATIONS

Engine	60 Big Foot
Horsepower	60
Cylinders	4
Gear Ratio	2.33:1
Model Number	
Engine Installation Height (outboard) (inches)	20"

## BOAT SPECIFICATIONS

Manufacturer	Brunswick Boat Group Fort Wayne Operations
Website	<a href="http://www.cypresscaypontoons.com">www.cypresscaypontoons.com</a>
Boat Model	Seabreeze Fish 210
Bottom Style/Paint	Pontoon
Material	Aluminum
Length (feet)	20'
Beam (feet)	8'6"
Transom Height (inches)	
Transom Angle (degrees)	
Deadrise Angle (degrees)	
Max HP Capacity	115 HP
Fuel Tank Capacity (gallons)	24 Gallons
Steering Type	Cable
Dry Boat Weight (pounds)	1950 lbs.
X-Dimension (MerCruiser)	N/A
Mounting Bolt Hole (outboard)	2nd Hole

## PROPELLER SPECIFICATIONS

Part Number	48-77338A33
Mercury Name	Black Max Big Foot
Diameter/Pitch	14"/11"
Number of Blades	3
Material	Aluminum