

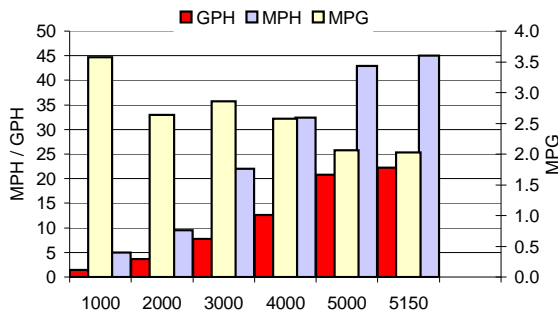
## TEST CONDITIONS

Test Date	7/25/2011
Test Conductors	Dustin Merveldt
Boat Weight as Tested (pounds)	5100
Air Temperature (degrees Fahrenheit)	85
Elevation (feet)	700
Wind Velocity (MPH)	5-10 MPH
Fresh/Salt Water	Fresh
Fuel Level at Testing (gallons)	50 Gallons

## PERFORMANCE SUMMARY

Top Speed (MPH@RPM)	45 @ 5150
Acceleration 0 - 20 MPH (seconds)	6.3
Acceleration 0 - 30 MPH (seconds)	9.6

## PERFORMANCE CURVE



## PERFORMANCE DATA

RPM	SPEED	FUEL	FUEL
RANGE	MPH	GPH	MPG
1000	5	1.4	3.6
2000	9.5	3.6	2.6
3000	22	7.7	2.9
4000	32.4	12.6	2.6
5000	42.9	20.8	2.1
5150	45	22.2	2.0

#DIV/0!

## ENGINE SPECIFICATIONS

Engine	350 Mag EC
Horsepower	300
Cylinders	8
Gear Ratio	2.20:1
Model Number	
Engine Installation Height (outboard) (inches)	N/A

## BOAT SPECIFICATIONS

Manufacturer	Brunswick Boat Group Fort Wayne Operations
Website	<a href="http://www.cypresscaypontoons.com">www.cypresscaypontoons.com</a>
Boat Model	Cayman SLE 250 - T3
Bottom Style/Paint	Pontoon
Material	Aluminum
Length (feet)	25'
Beam (feet)	8'6"
Transom Height (inches)	
Transom Angle (degrees)	
Deadrise Angle (degrees)	
Max HP Capacity	425 HP
Fuel Tank Capacity (gallons)	81 Gallons
Steering Type	Power Assist
Dry Boat Weight (pounds)	TBD
X-Dimension (MerCruiser)	1" Down
Mounting Bolt Hole (outboard)	N/A

## PROPELLER SPECIFICATIONS

Part Number	48-823630A60 / 48-823664A60
Mercury Name	Bravo 3 Gen 1
Diameter/Pitch	15 3/4" X 22" - 14 1/4" X 22"
Number of Blades	3 / 3
Material	Stainless