

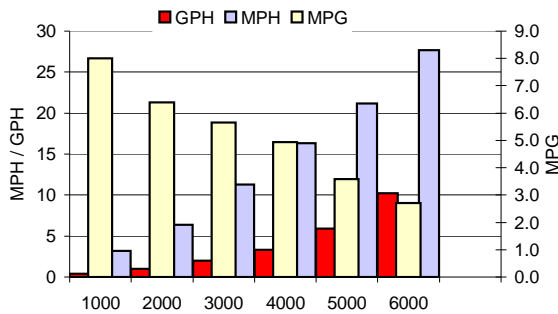
TEST CONDITIONS

Test Date	7/25/2011
Test Conductors	Dustin Merveldt
Boat Weight as Tested (pounds)	3320
Air Temperature (degrees Fahrenheit)	85
Elevation (feet)	700
Wind Velocity (MPH)	5-10 MPH
Fresh/Salt Water	Fresh
Fuel Level at Testing (gallons)	Full

PERFORMANCE SUMMARY

Top Speed (MPH@RPM)	27.7 @ 6000
Acceleration 0 - 20 MPH (seconds)	7.7
Acceleration 0 - 30 MPH (seconds)	N/A

PERFORMANCE CURVE



PERFORMANCE DATA

RPM	SPEED	FUEL	FUEL
RANGE	MPH	GPH	MPG
1000	3.2	0.4	8.0
2000	6.4	1.0	6.4
3000	11.3	2.0	5.7
4000	16.3	3.3	4.9
5000	21.2	5.9	3.6
6000	27.7	10.2	2.7

#DIV/0!

ENGINE SPECIFICATIONS

Engine	115 Four Stroke
Horsepower	115
Cylinders	4
Gear Ratio	2.33:1
Model Number	
Engine Installation Height (outboard) (inches)	20"

BOAT SPECIFICATIONS

Manufacturer	Brunswick Boat Group Fort Wayne Operations
Website	www.cypresscaypontoon.com
Boat Model	Cabana 220
Bottom Style/Paint	Pontoon
Material	Aluminum
Length (feet)	22'
Beam (feet)	8'6"
Transom Height (inches)	
Transom Angle (degrees)	
Deadrise Angle (degrees)	
Max HP Capacity	150 HP
Fuel Tank Capacity (gallons)	26 Gallons
Steering Type	Hydraulic
Dry Boat Weight (pounds)	2147 lbs
X-Dimension (MerCruiser)	N/A
Mounting Bolt Hole (outboard)	2nd Hole

PROPELLER SPECIFICATIONS

Part Number	48-77340CP1
Mercury Name	BlackMax Extra Cup
Diameter/Pitch	14"/13"
Number of Blades	3
Material	Aluminum